

# SPECIFICATION

Hardware	
a. Airframe Type	: Fixed Wing with VTOL arm
b. Material	: Expanded Poly Olefin (EPO) with carbon fiber spar
c. Wingspan	: 1950MM
d. Length	: 1287MM
e. Height	: 394MM
f. Weight	: 6,5 kg
g. Take Off & Landing	: Automatic Vertical Takeoff and Landing
h. Autopilot	: PIXHAWK FMU V3
j. Main FMU Processor	: STM32F427VIT6 / Coprocessor STM32F100C8T6 / E-compass IST8301
	FRAM 256 Kb (724 waypoints)
	Operating Temperature -40~80°C
Sensor	
a. Camera	: Sony A6000 24Mp with 20mm F/2.8 Lens
b. Camera Control	: Autopilot automatic Distance-based trigger
Ground Control System	
a. Radio Control	: 2.4 GHz, Upto 5km distance
b. Telemetry Link	: 433 mHz, Upto 10km distance
Flight Performance	
a. Flight Time	: Upto 90 min
b. Flight Altitude	: 250 m – 500 m AGL
c. Nominal Flight Range	: 90 Km
d. Survey Result	: 850 Ha/Flight, Flight alt 300 mtr, GSD 5.80 cm Overlap 80% Sidelap 70%

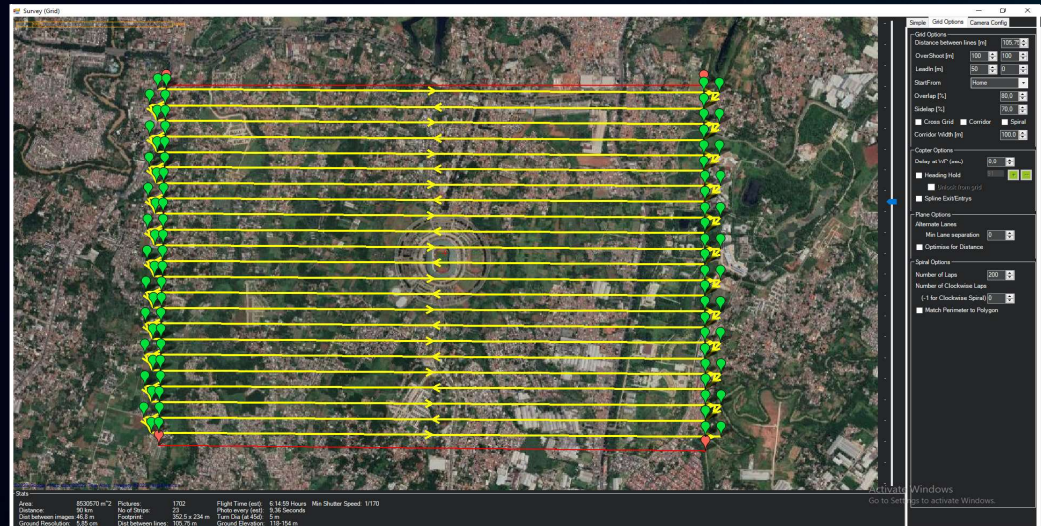


## SKY CROSSWIND PRO







VTOL Fixed Wing  
Up to 90 Minutes Flight Time

### Packaging Includes

- a. 1x Flight-tested, ready to fly VTOL UAV
- b. 2x Flight High Performance Battery
- c. 1x RC Radio Controller
- d. 1x Sony A6000 24Mp with 20mm F/2.8 Lens
- e. 1x Telemetry Link 433 mHz
- f. 1x Portable toolbox kit
- g. 1x Quick battery charger
- h. 1x Portable, travel-friendly hard case for UAV



### OPTIONAL HARDWARE

					
Emlid Reach M2 With GNSS Antenna Base	Emlid Reach M2 With GNSS Antenna Rover	Sony Cybershot DSC RX1R II	MicaSense RedEdge-MX Multispectral Camera	3D Oblique Camera 120MP	Sony a7R Mark III