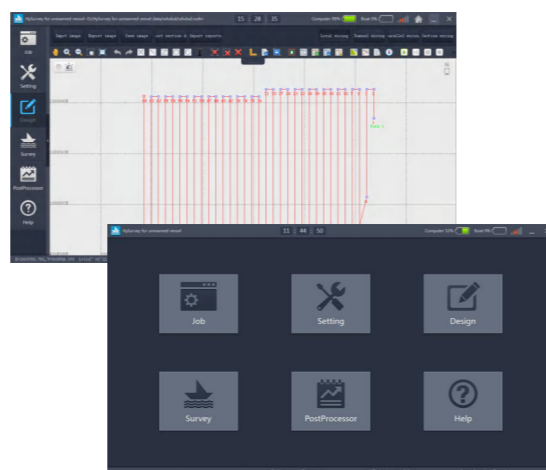


**SOFTWARE**

**About AUTO-PILOT**

South owns the independent R&D ground control software, masters the core technology. It can support tasks planning, paths management, data collection, etc. In the case of static water, the accuracy of the sailing path can be 0.1m, and the accuracy error will not exceed 1m in the case of level 2 sea condition(Smooth-wavelet).

Equipped with South high-precision GNSS receiver and controlling system, SU30 can automatically return after completing the preset tasks, perfect match multiple operation modes and realize accurately sailing along the planned path.



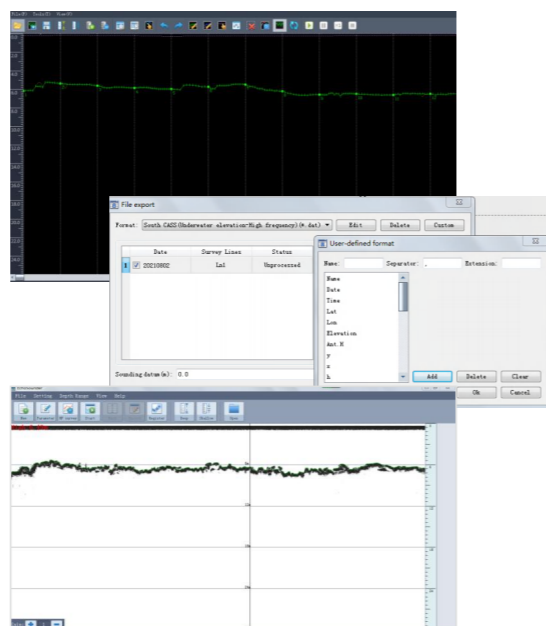
**About HYSURVEY**

Hysurvey software is for single beam echo sounder survey software, support Windows system. The simple operation, stable running, professional and multi-function let Hysurvey to be the one of the most widely used hydrographic software.

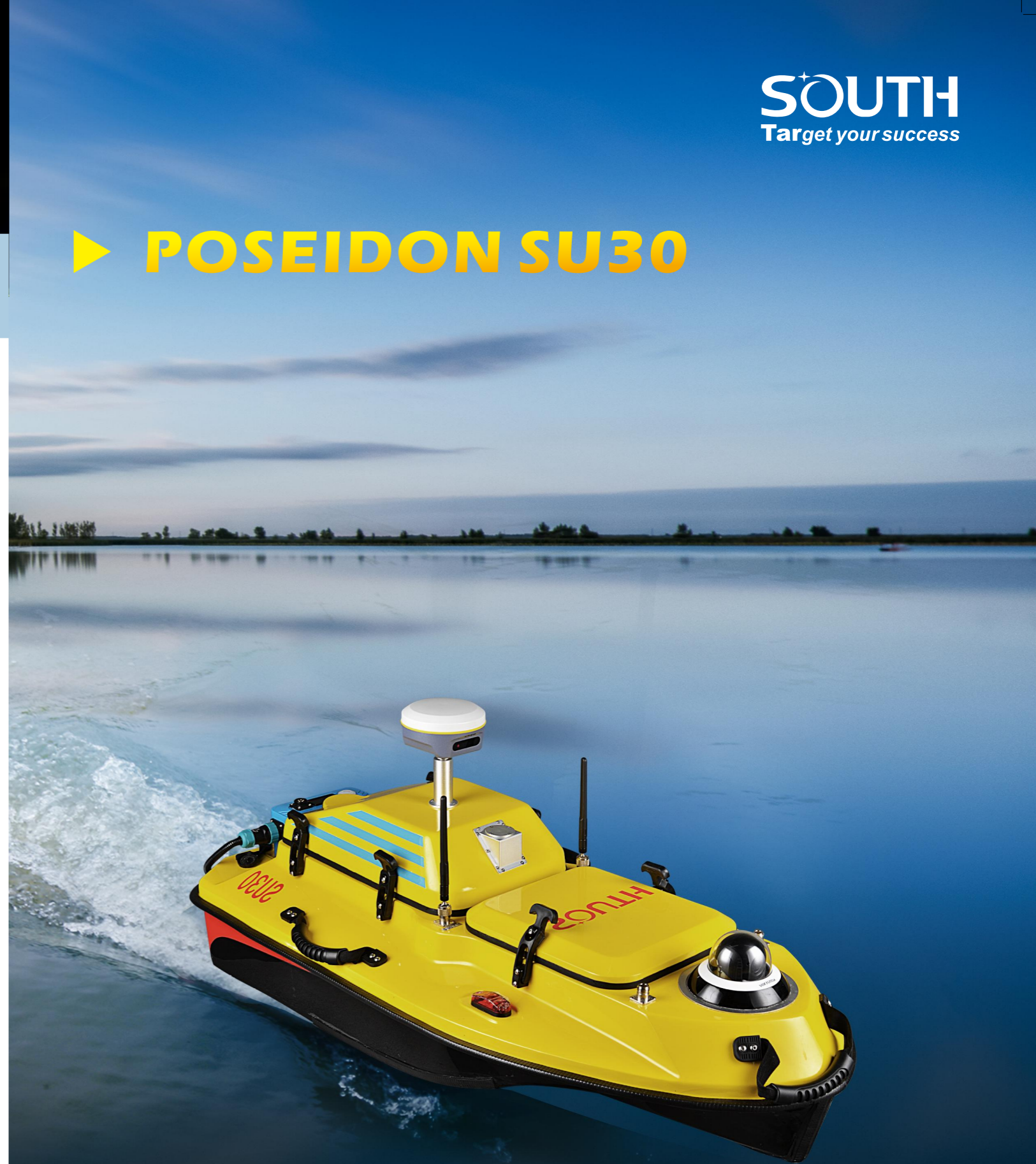
SOUTH Hysurvey supports all types of GNSS receivers, supports the multiple sensor correction, like SVP, tide station and so on, Hysurvey processes all the data and exports to the coordinate of see bottom.

Hysurvey supports the output of data in custom format, which facilitates data export and enables users to perform data post-processing more quickly and conveniently.

Echo sounder software can configure the SOUTH echo sounder parameters, show the wave images, mark and export the PDF format files.



**▶ POSEIDON SU30**



**UNMANNED SURFACE VEHICLE  
SMALL FRAME  
MARVELLOUS ENERGY**





## DUAL CULVERT-DESIGN PROPELLER

Rugged and durable, strong corrosion resistance makes it can work in sea water and waste water, waterproof IP68. Effectively prevent deposits. Easy to disassemble and assemble.



## WIDER PERSPECTIVE

The camera is in the front position with 360° rotating angle. It has twice the monitoring angle than ordinary camera, contains a larger monitoring range, more targets are presented in pictures and video at the same time, the result is more coherent and the target is clear.



## MODULAR DESIGN

Unique moon pool design: a separate hole in the middle of the hull for easy replacement of equipment (Standard: SDE-18S Echo Sounder. Option: SDE-19S, ADCP, etc. ). And the removable propeller, camera and battery can make after-sales more convenient and efficient.

## REMOTE CONTROLLER

H16 remote controller adopts wireless communication mode with 2.4GHz working frequency, that the maximum communication range is up to 2km. The controller is equipped with a big LCD screen that the image captured by camera can be viewed at any time, truly enhance the utility and compatibility.



Poseidon SU30 USV is a new generation of high intelligent USV. The modular design brings enormous convenience for both end users and manufacturers. Small physical makes hydrographic survey go everywhere. Fields of Surveying and Mapping, Hydrogeology and Water Management can be easily covered. In addition, SU30 can be customized according to user's requirements.

## SPECIFICATIONS

Physical	
Dimensions	1205mm × 560mm × 440mm
Weight (no instrument)	7kg
Performance in wind and wave-resistance	≤smooth-wavelet 0.1~0.5m, ≤windspeed 3BF, 3.4~5.4m/s
Material	High-impact GFRP
Draft (Draught)	≤15cm
Maximum speed	6m/s
Include motor	Yes, two corrosion-resistant motors that can work in seawater
Include positioning system	Yes, GNSS RTK receiver, compatible with different brands
Communication	
Methods	5.8G, R/C 2.4G, LTE 4G (optional)
R/C Range	2KM
R/C Frequency	2.4GHZ

Battery	
Type	Lithium polymer
Power	29.4V 35Ah
Duration	More than 4 hours
Waterproof	IP68
Camera	
Resolution	1920 × 1080
Infrared Distance	≥20m
Focus mode	Automatic / Semiautomatic / manual
Digital zoom	16 times
Waterproof	IP65